



PROOF OF AUTHENTICITY



MZ Biolabs  
2102 N Country Club Rd  
Tucson, AZ 85716  
[contact@mzbiolabs.com](mailto:contact@mzbiolabs.com)  
[www.mzbiolabs.com](http://www.mzbiolabs.com)

# Certificate of Analysis

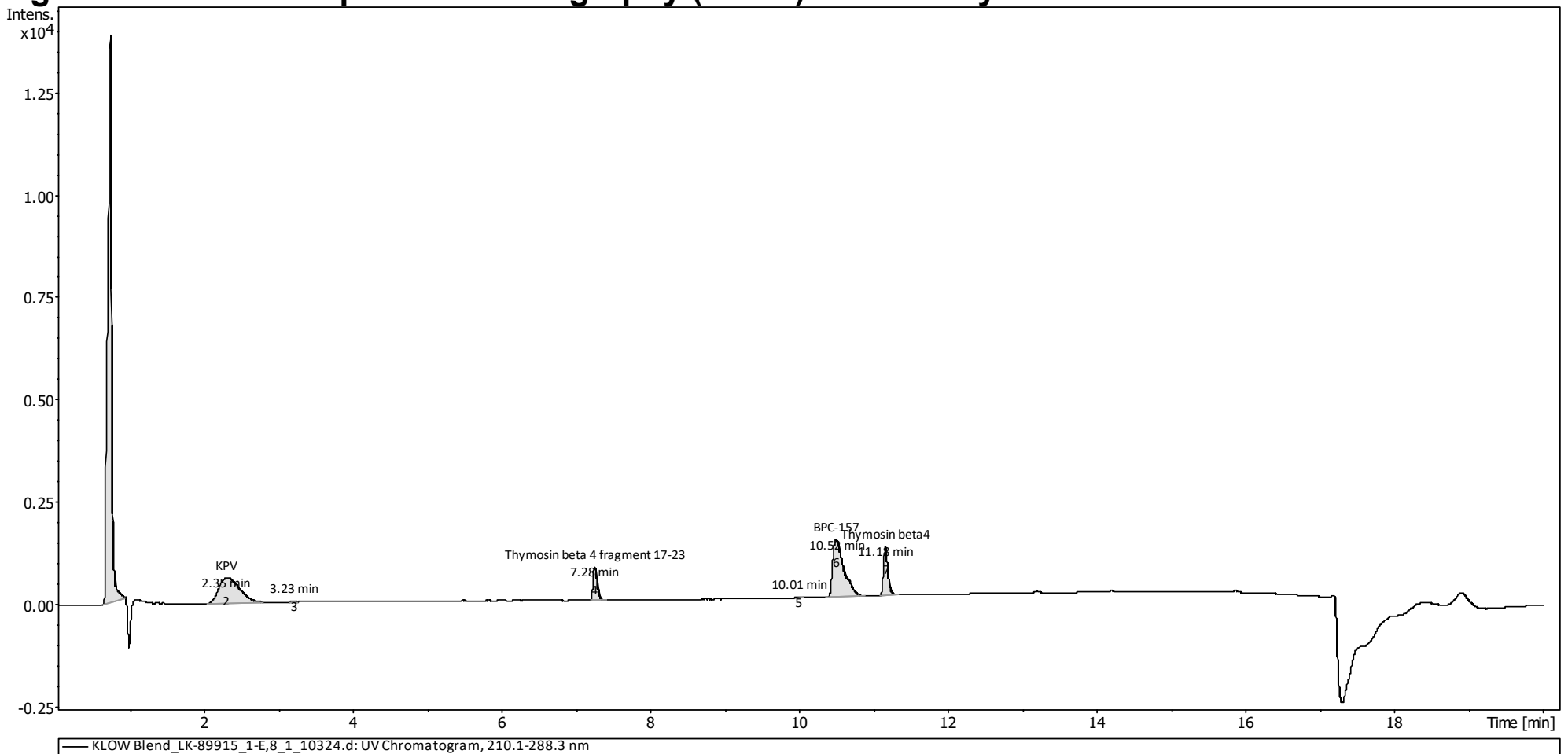
KLOW (GHK-Cu, BPC-157, Thymosin beta4, TB-500, KPV)

**Compounds** : **KPV, GHK-CU, TB-500**  
**BPC-157, Thymosin β4**

**Client** : **Arizona Peptides**  
[www.arizonapeptides.us](http://www.arizonapeptides.us)

**Lot number** : **KL-89915**  
**Analysis date** : **2025-12-05**  
**Purity %** : **99.90%**  
**GHK Copper** : **59.01 mg**  
**BPC-157** : **12.92 mg**  
**Thymosin β4** : **7.06 mg**  
**TB-500** : **5.54 mg**  
**KPV** : **10.9 mg**  
**Method** : **HPLC-UV-MS**

## High Performance Liquid Chromatography (HPLC) UV – Purity Test



PEAK LIST		Number of detected peaks: 7		
	Time (min)	Area	%Area	
1	0.79	5.07E+04	59.34	GHK-Cu
2	2.35	1.23E+04	14.37	KPV
3	3.23	3.77E+01	0.04	
4	7.28	3.04E+03	3.56	TB-500(Frag 17-23)
5	10.01	4.01E+01	0.05	
6	10.52	1.46E+04	17.09	BPC-157
7	11.18	4.73E+03	5.54	Thymosin beta-4

**Overall Purity : 99.90**

Analysis Performed by  
Ken Pendarvis, ChE  
Analytical Chemist  
MZ Biolabs  
[contact@mzbiolabs.com](mailto:contact@mzbiolabs.com)

2025-12-10

Note: Injectable peptides may contain salts and sugars to aid in solubility and act as pH buffers. These are not normally detected using UV and are not considered impurities.



MZ Biolabs  
2102 N Country Club Rd  
Tucson, AZ 85716  
[contact@mzbiolabs.com](mailto:contact@mzbiolabs.com)  
[www.mzbiolabs.com](http://www.mzbiolabs.com)

## GHK-Cu, BPC-157, Thymosin beta4, KPV

### Mass Spectrometry (MS) – Identity Test

#### Identity confirmed using HPLC-MS

Molecular weight calculated using monoisotopic m/z values from mass spectrum

#### GHK-Cu PubChem CID: 71587328

<https://pubchem.ncbi.nlm.nih.gov/compound/71587328>

Expected monoisotopic mass : 402.10 Da

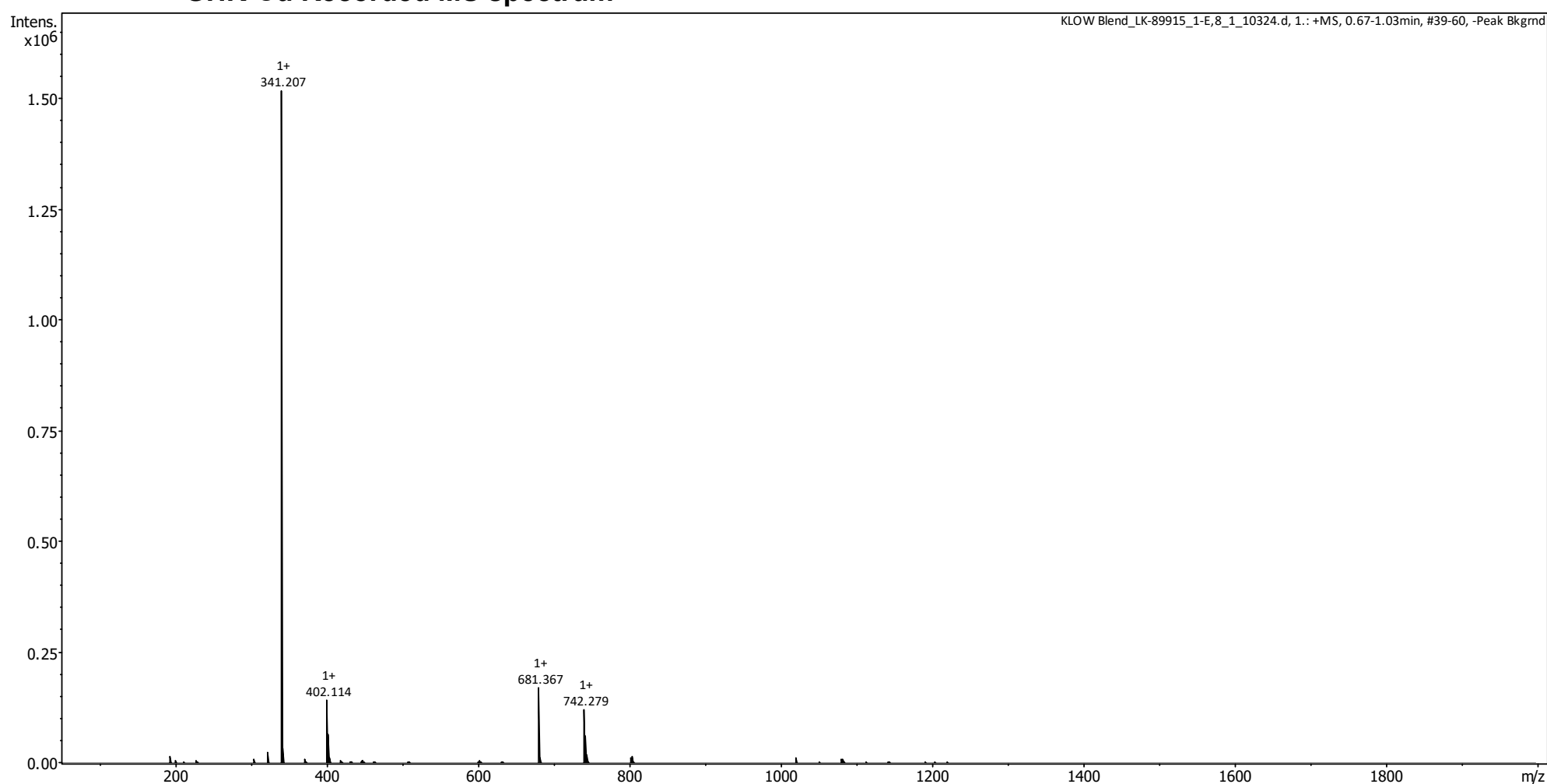
Measured monoisotopic mass : 402.11 Da

**Molecular weight confirmed**

Note : Monoisotopic m/z values are not easily seen in full spectrum view for larger molecules and peptides.

The dominant isotopic peak (base peak) shown in the spectrum below can be used to approximate the average molecular weight frequently reported by vendors and databases as a secondary means of confirmation.

#### GHK-Cu Recorded MS spectrum



Analysis Performed by  
Ken Pendarvis, ChE  
Analytical Chemist  
MZ Biolabs  
[contact@mzbiolabs.com](mailto:contact@mzbiolabs.com)

2025-12-10



MZ Biolabs  
2102 N Country Club Rd  
Tucson, AZ 85716  
[contact@mzbiolabs.com](mailto:contact@mzbiolabs.com)  
[www.mzbiolabs.com](http://www.mzbiolabs.com)

## GHK-Cu, BPC-157, Thymosin beta4, KPV

### Mass Spectrometry (MS) – Identity Test

#### Identity confirmed using HPLC-MS

Molecular weight calculated using monoisotopic m/z values from mass spectrum

#### BPC-157 PubChem CID: 9941957

<https://pubchem.ncbi.nlm.nih.gov/compound/9941957>

Expected monoisotopic mass : 1418.70 Da

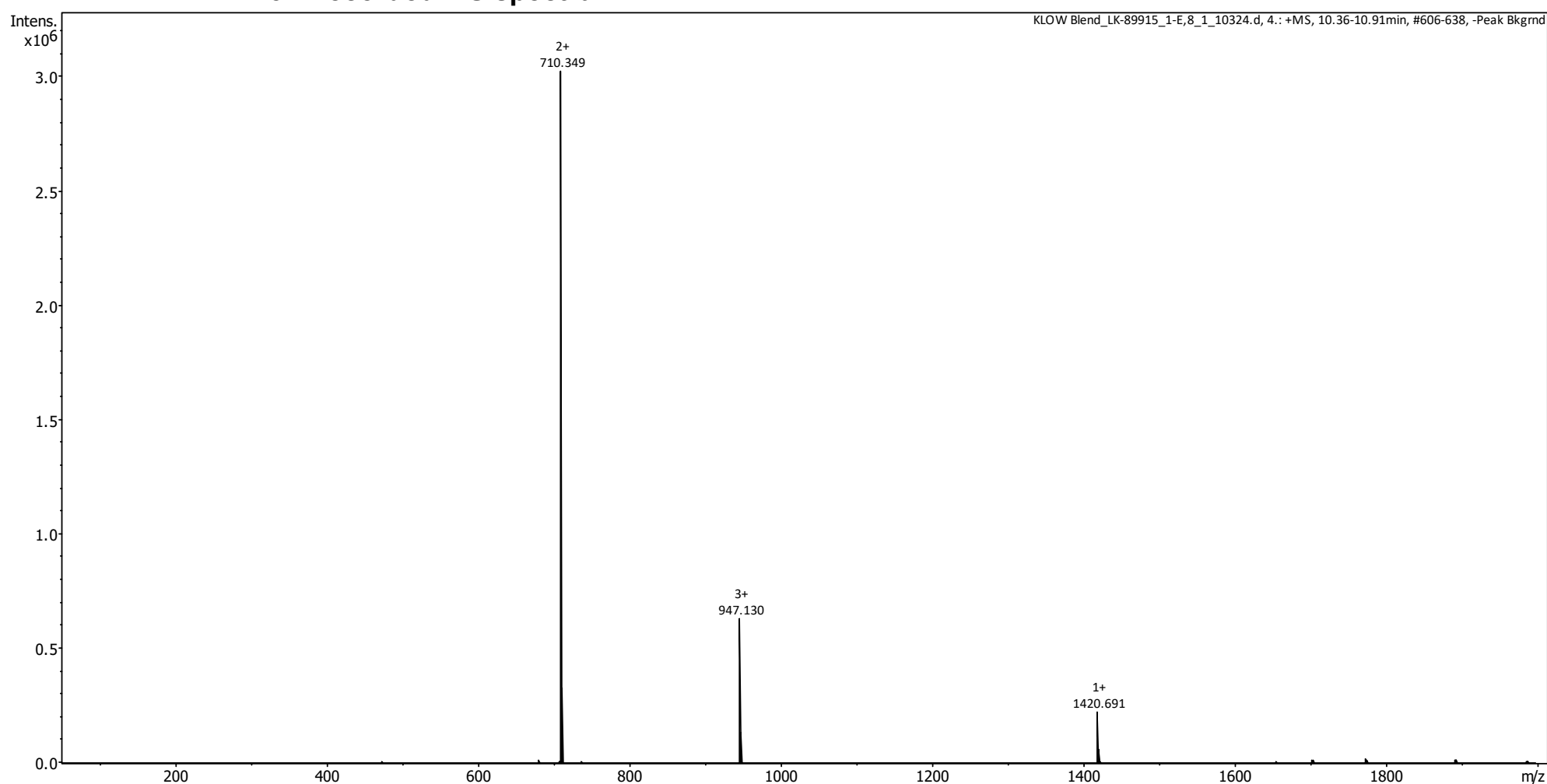
Measured monoisotopic mass : 1418.70 Da

**Molecular weight confirmed**

Note : Monoisotopic m/z values are not easily seen in full spectrum view for larger molecules and peptides.

The dominant isotopic peak (base peak) shown in the spectrum below can be used to approximate the average molecular weight frequently reported by vendors and databases as a secondary means of confirmation.

#### BPC-157 Recorded MS spectrum



Analysis Performed by  
Ken Pendarvis, ChE  
Analytical Chemist  
MZ Biolabs  
[contact@mzbiolabs.com](mailto:contact@mzbiolabs.com)

2025-12-10



MZ Biolabs  
2102 N Country Club Rd  
Tucson, AZ 85716  
[contact@mzbiolabs.com](mailto:contact@mzbiolabs.com)  
[www.mzbiolabs.com](http://www.mzbiolabs.com)

## GHK-Cu, BPC-157, Thymosin beta4, KPV

### Mass Spectrometry (MS) – Identity Test

#### Identity confirmed using HPLC-MS

Molecular weight calculated using monoisotopic m/z values from mass spectrum

#### Thymosin beta4 PubChem CID: 16132341

<https://pubchem.ncbi.nlm.nih.gov/compound/16132341>

Expected monoisotopic mass : 4960.48 Da

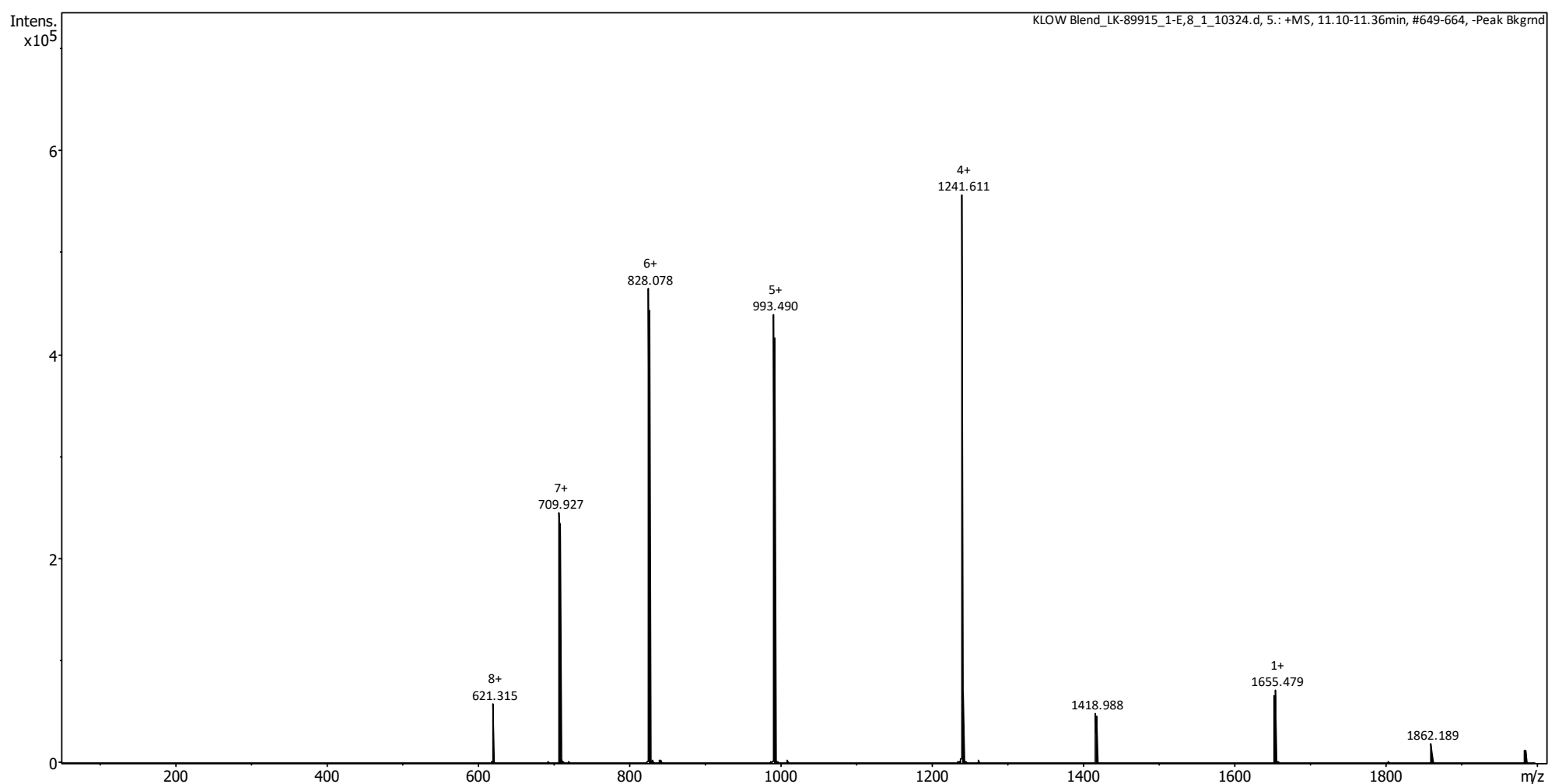
Measured monoisotopic mass : 4960.48 Da

**Molecular weight confirmed**

Note : Monoisotopic m/z values are not easily seen in full spectrum view for larger molecules and peptides.

The dominant isotopic peak (base peak) shown in the spectrum below can be used to approximate the average molecular weight frequently reported by vendors and databases as a secondary means of confirmation.

#### Thymosin beta4 Recorded MS spectrum



Analysis Performed by  
Ken Pendarvis, ChE  
Analytical Chemist  
MZ Biolabs  
[contact@mzbiolabs.com](mailto:contact@mzbiolabs.com)

2025-12-10



MZ Biolabs  
2102 N Country Club Rd  
Tucson, AZ 85716  
[contact@mzbiolabs.com](mailto:contact@mzbiolabs.com)  
[www.mzbiolabs.com](http://www.mzbiolabs.com)

## Mass Spectrometry (MS) – Identity Test

### Mass Spectrometry (MS) – Identity Test

#### Identity confirmed using HPLC-MS

Molecular weight calculated using monoisotopic m/z values from mass spectrum

#### TB-500 PubChem CID: 62707662

<https://pubchem.ncbi.nlm.nih.gov/compound/62707662>

Expected monoisotopic mass : 888.49 Da

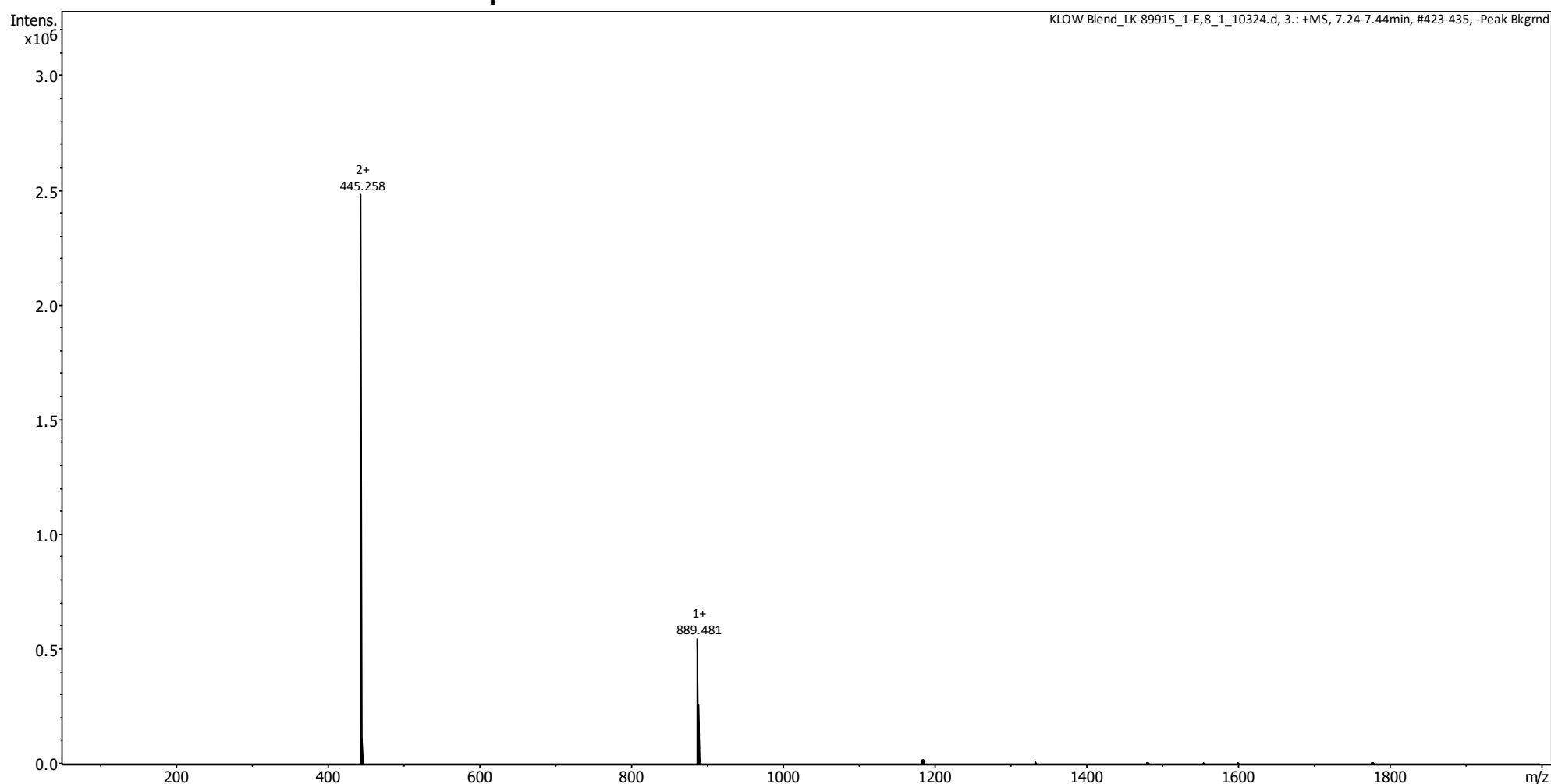
Measured monoisotopic mass : 888.52 Da

**Molecular weight confirmed**

Note : Monoisotopic m/z values are not easily seen in full spectrum view for larger molecules and peptides.

The dominant isotopic peak (base peak) shown in the spectrum below can be used to approximate the average molecular weight frequently reported by vendors and databases as a secondary means of confirmation.

#### TB-500 Recorded MS spectrum



Analysis Performed by  
Ken Pendarvis, ChE  
Analytical Chemist  
MZ Biolabs  
[contact@mzbiolabs.com](mailto:contact@mzbiolabs.com)

2025-12-10

## GHK-Cu, BPC-157, Thymosin beta4, KPV

### Mass Spectrometry (MS) – Identity Test

#### Identity confirmed using HPLC-MS

Molecular weight calculated using monoisotopic m/z values from mass spectrum

#### KPV PubChem CID : 125672

<https://pubchem.ncbi.nlm.nih.gov/compound/125672>

Expected monoisotopic mass : 342.23 Da

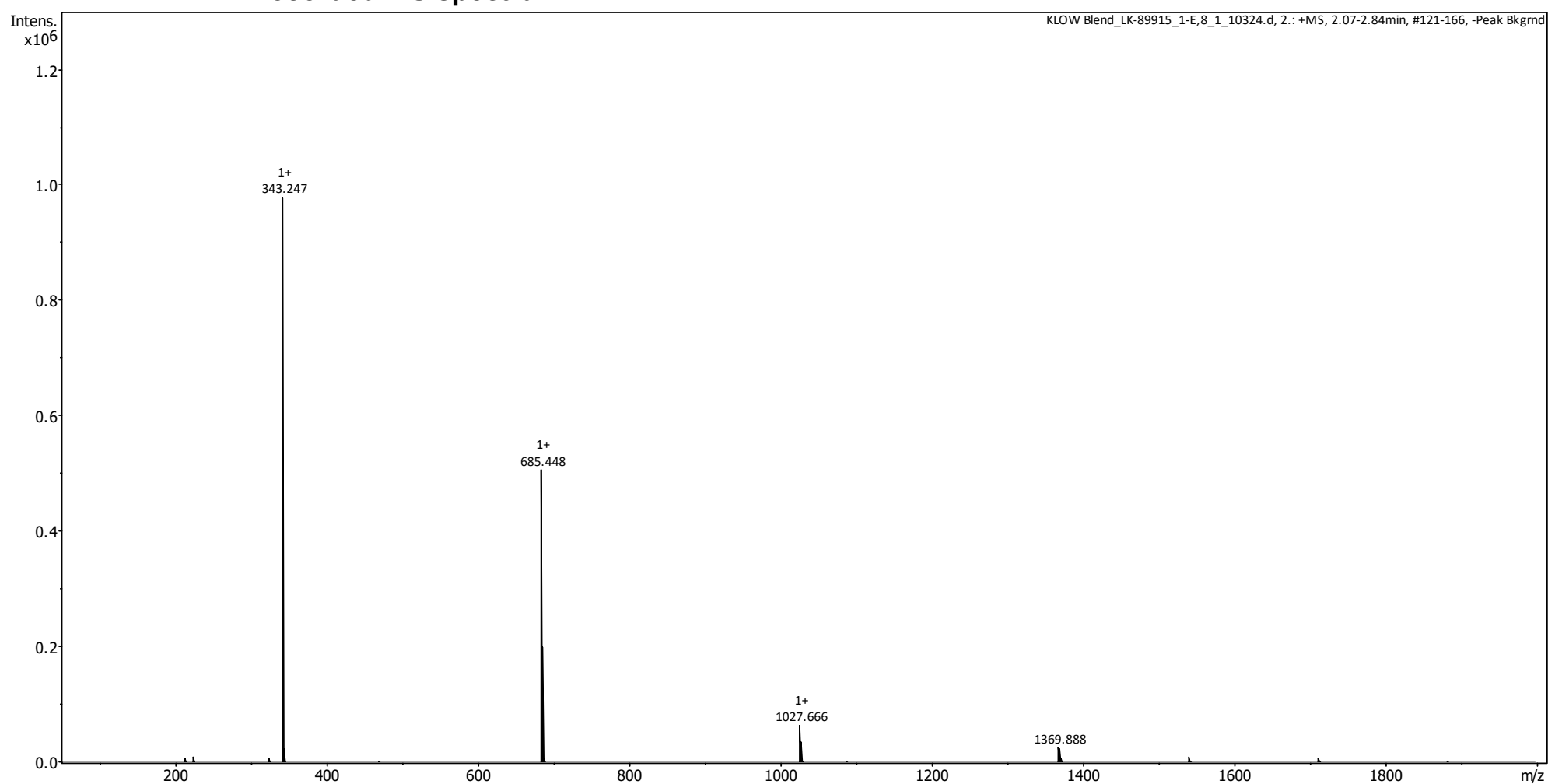
Measured monoisotopic mass : 342.25 Da

**Molecular weight confirmed**

Note : Monoisotopic m/z values are not easily seen in full spectrum view for larger molecules and peptides.

The dominant isotopic peak (base peak) shown in the spectrum below can be used to approximate the average molecular weight frequently reported by vendors and databases as a secondary means of confirmation.

#### KPV Recorded MS spectrum



Analysis Performed by  
Ken Pendarvis, ChE  
Analytical Chemist  
MZ Biolabs  
[contact@mzbiolabs.com](mailto:contact@mzbiolabs.com)



2025-12-10